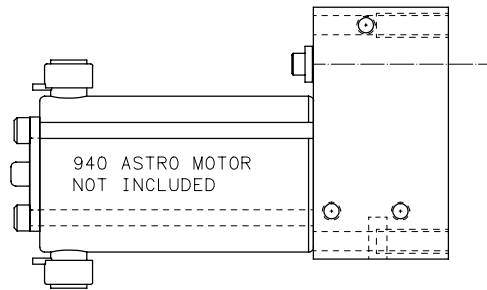


Scale HALF	Dr By TSE	TEAM WHYACHI ROBOTICS	814 E. FIRST AVE. DORCHESTER, WI.	A	TWA40 OPT	OF	A
Date 8-26-2002	Chk By			SIZE			REV.
THIS DRAWING AND ALL INFORMATION PRESENTED IS THE PROPERTY OF TEAM WHYACHI LLC AND IS STRICTLY CONFIDENTIAL. IT SHALL NOT BE COPIED, REPRODUCED OR REVEALED WITHOUT WRITTEN CONSENT. THIS DRAWING MUST BE RETURNED UPON REQUEST.				TOLERANCE (EXCEPT AS NOTED) .0 — .032 .00 — .015 .000 — .005		TITLE: TWA 40 GEARBOX SYSTEM	
				FOR: BOX, SHAFT & WHEEL OPTIONS		TWR IDENTIFICATION NO.	
				QTY.	DESCRIPTION		

GEARBOX OPTIONS

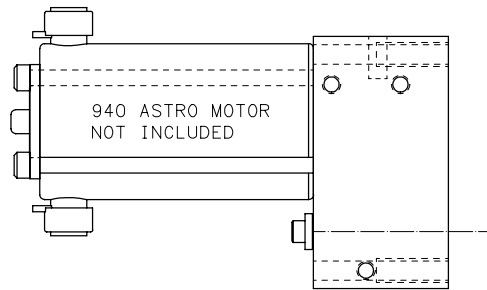
TWA40 R

RIGHT HAND GEARBOX



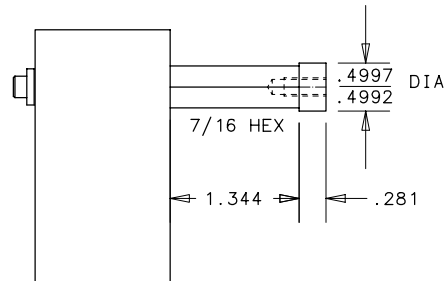
TWA40 L

LEFT HAND GEARBOX



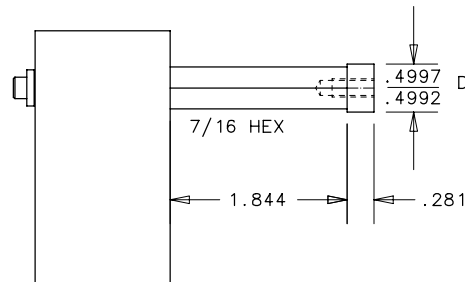
SHAFT OPTIONS

ALL SHAFTS ARE REMOVABLE WITH #10-32 TAP IN END MATERIAL: 4130 NORMALIZED



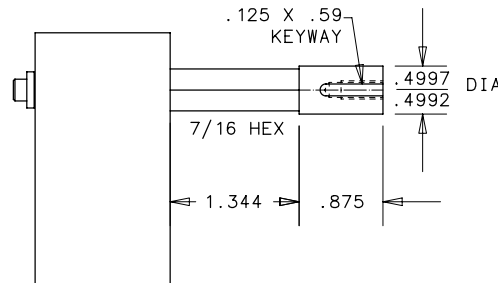
40SH10

HEX SHAFT FOR 1" WIDE WHEEL



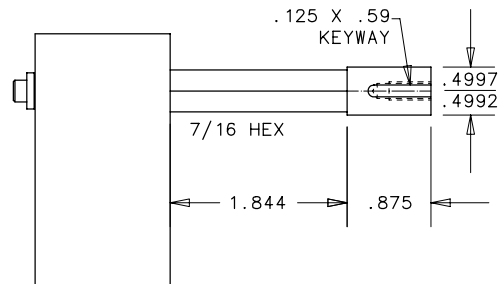
40SH15

HEX SHAFT FOR 1.5" WIDE WHEEL



40SH10 EX

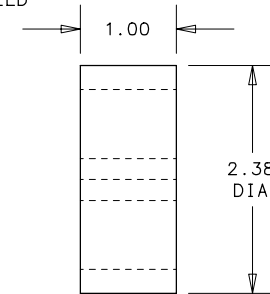
HEX SHAFT FOR 1" WIDE WHEEL W/ SLAVE DRIVE EXTENSION



40SH15 EX

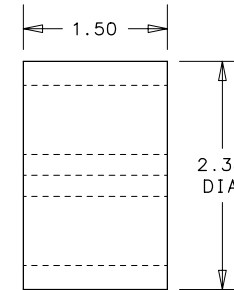
HEX SHAFT FOR 1.5" WIDE WHEEL W/ SLAVE DRIVE EXTENSION

WHEEL OPTIONS



W238H-100-44H

1" WIDE WHEEL

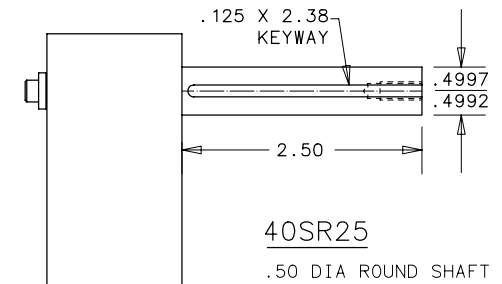


W238H-150-44H

1.5" WIDE WHEEL

2.38" DIA WHEELS HAVE 65 DUROMETER URETHANE TREAD FORTAL ALUMINUM HUB 7/16" HEX BORE

238H .25 TREAD
238 .44 TREAD



40SR25

.50 DIA ROUND SHAFT